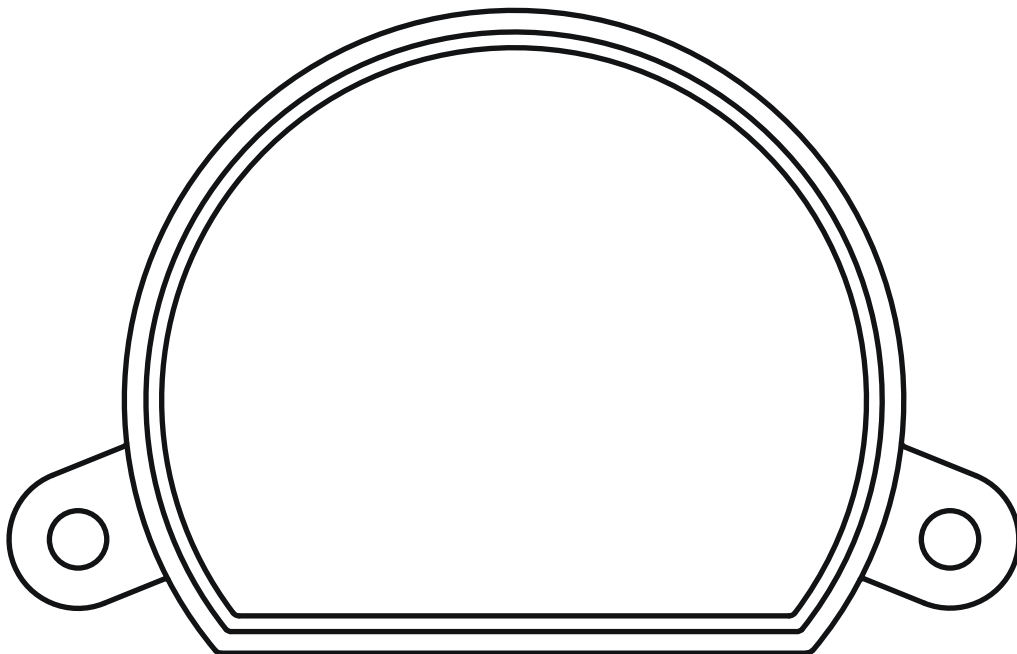


# MCU-S8/W



**Control unit for management with radio transmitters of scenarios created on the OneSmart WiFi application.  
Power supply 230Vac, RF433,92MHz.  
Integrated 433.92 MHz radio receiver.  
WiFi connection for OneSmart App.**

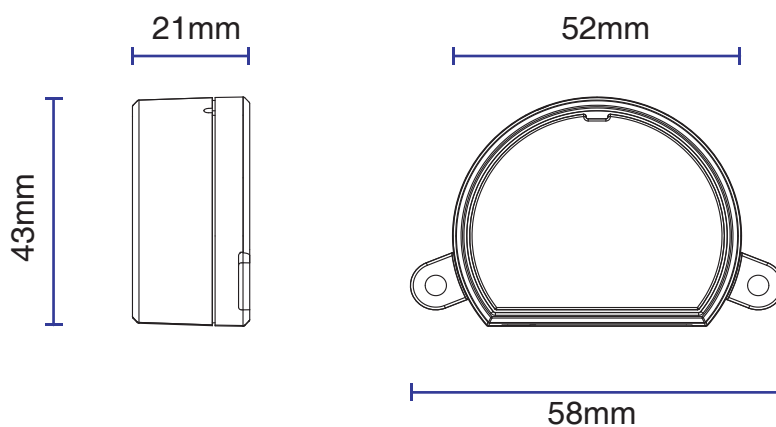
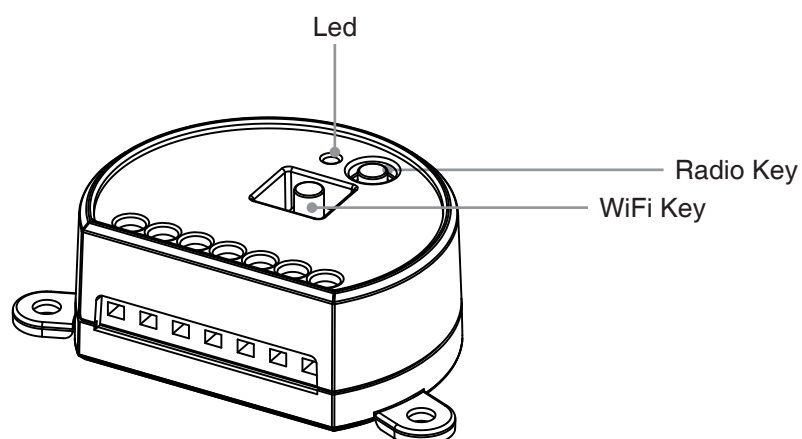
## INDEX

|  |         |
|--|---------|
| 1 - PRODUCT FEATURES   |         |
| 1.1 - TECHNICAL DATA   | Page 3  |
| <hr/>  |         |
| 2 - CONNECTION DIAGRAMS  |         |
| 2.1 - CONNECTION DIAGRAM   | Page 4  |
| <hr/>  |         |
| 3 - USE OF THE CONTROL UNIT  |         |
| 3.1 - TYPICAL INSTALLATION   | Page 5  |
| 3.2 - USE  | Page 5  |
| <hr/>  |         |
| 4 - MANAGEMENT WITH REMOTE CONTROL                                 |         |
| 4.1 - RADIO PROGRAMMING ASSOCIATED WITH S1 / S2 / S3 / S4 SCENARIO | Page 6  |
| 4.2 - RADIO PROGRAMMING ASSOCIATED WITH S5 / S6 / S7 / S8 SCENARIO | Page 6  |
| 4.3 - DELETION OF REMOTE CONTROL                                   | Page 7  |
| <hr/>  |         |
| 5 - CONTROL WITH APP ONE SMART                                     |         |
| 5.1 - APP ONE SMART CONNECTION                                     | Page 8  |
| 5.2 - USE OF "ONESMART" FOR THE CREATION OF AUTOMATIONS            | Page 9  |
| <hr/>  |         |
| 6 - ADVANCED PROGRAMS  |         |
| 6.1 - RESET  | Page 10 |
| <hr/>  |         |

# 1 - PRODUCT FEATURES

## 1.1 TECHNICAL DATA

|                                 |  |
|---------------------------------|--|
| Power supply (Input)            | 230Vac   |
| Functionality                   | Remote control management of scenarios with WiFi app |
| N° of programmable transmitters | 30 in total  |
| RF receiver frequency           | 433.920MHz   |
| WiFi frequency                  | 2.4GHz   |
| Protection rating               | IP20   |
| Working temperature             | -20° +55°  |
| Box dimensions                  | 58x43x21 mm  |

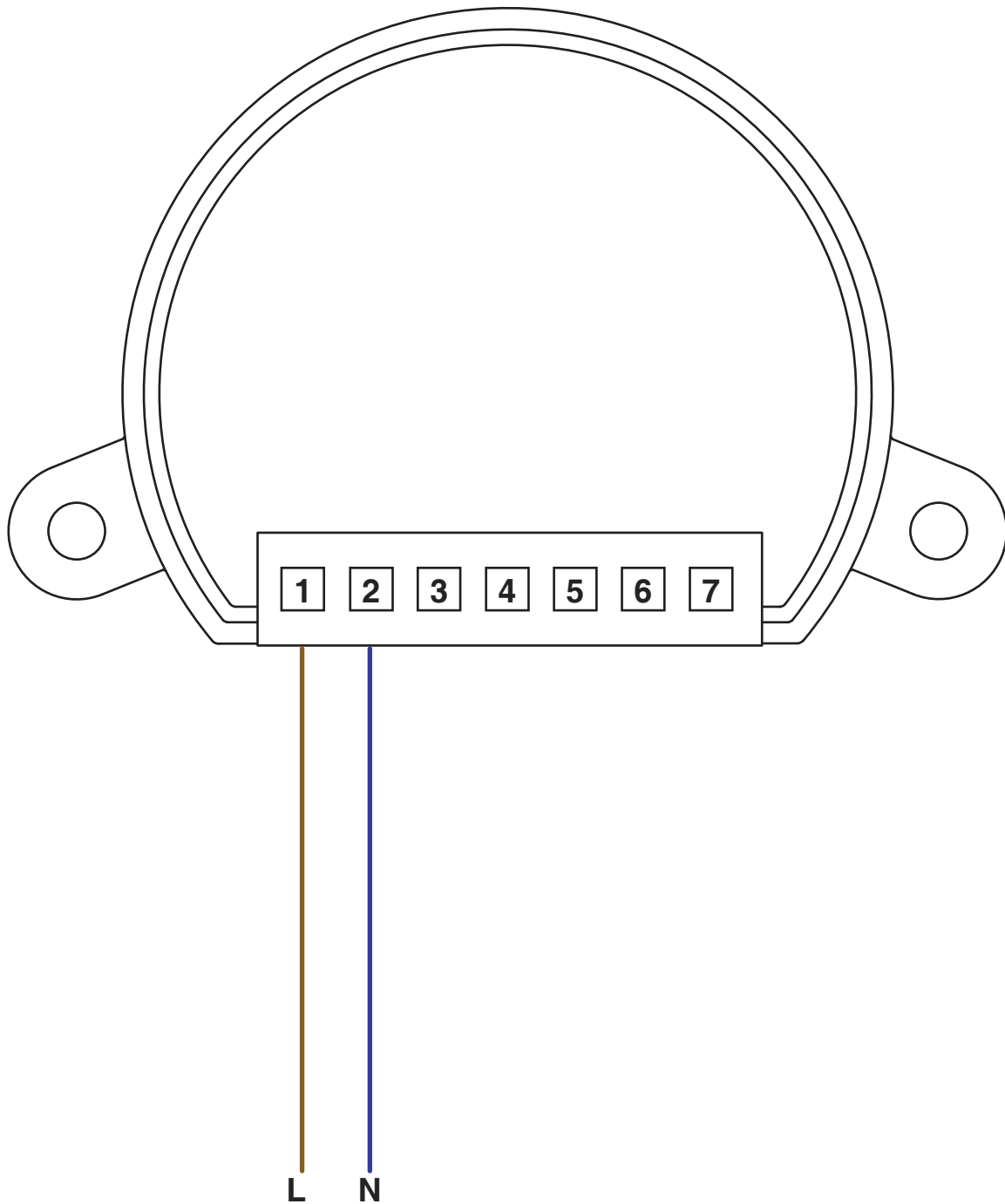


## 2 - CONNECTION DIAGRAMS

### RECOMMENDATIONS

- Installation must be carried out only by professional technicians in accordance with the applicable electrical and safety regulations.
- All connections shall be operated without electrical voltage.
- Use proper cables.
- Don't cut the antenna
- Provide in the power line with an appropriate disconnection device
- Dispose of waste materials in full compliance with local law.
- Do not exceed the specified load limits and use correctly protected power supplies.

### 2.1 CONNECTION

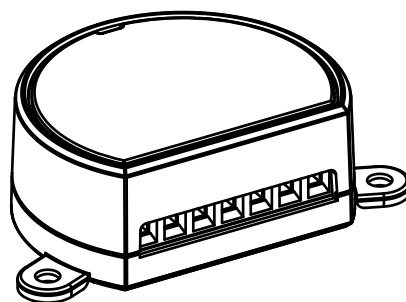


### 3 - USE OF THE CONTROL UNIT

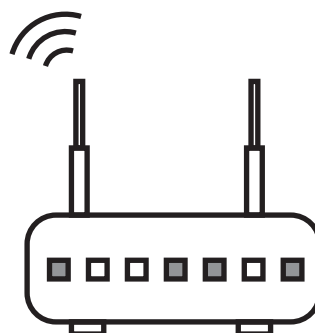
#### 3.1 TYPICAL INSTALLATION



**TRANSMITTERS  
ASSOCIATED WITH THE  
CONTROL UNIT TO RECALL  
THE SCENARIOS**  
See paragraph 4



**NEXTA CONTROL UNIT**



**ROUTER WITH INTERNET  
CONNECTION**



**APP CONTROL  
CONFIGURATION**  
See paragraph 5

#### 3.2 USE

To make the system work, you need to:

- Power up and associate at least one remote control to the control unit
- Configure application control
- Have other devices on the application to direct the commands to
- Create automation related to the device in the application

Later it will be possible to recall the automation created with the remote control

## 4 - MANAGEMENT WITH REMOTE CONTROL

This procedure lets you programme/delete compatible transmitters.

### Example of generic (wireless bus) transmitters, codes:

HB80-6G,  
MCU-TX4,  
TOUCH-1G, TOUCH-2G, TOUCH-4G, TOUCH-LOCK4, TOUCH-TX2,  
ROUND-1G

#### 4.1 - RADIO PROGRAMMING ASSOCIATED WITH S1 / S2 / S3 / S4 SCENARIO

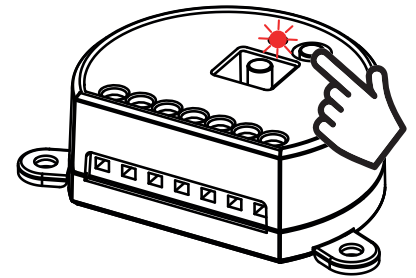
With this procedure it is possible to program transmitters compatible with the scenarios created in the application.

##### STEP 1

Make short presses of the RADIO button on the receiver. The led changes colour with each press.

Stop on the colour corresponding to the scenario to which you want to associate the key according to the following table:

| LED COLOUR | ASSOCIATED SCENARIO |
|------------|---------------------|
| Red        | S1                  |
| Green      | S2                  |
| Blue       | S3                  |
| White      | S4                  |

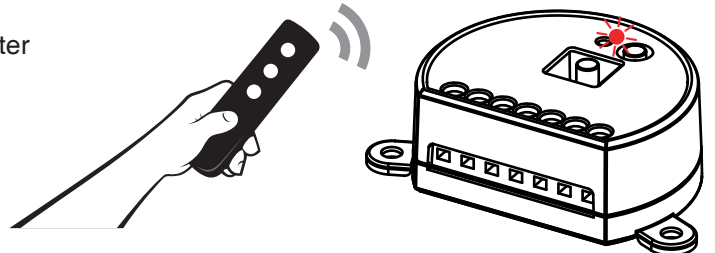


**ACTION:**  
Short pressure RADIO button

##### STEP 2

Within 60 seconds make a transmission with the transmitter to be saved.

The LED on the receiver Flashes 3 times and turns off.



**AZIONE:** Sending a command with the transmitter **LED:** Flashes 3 times

#### 4.2 - RADIO PROGRAMMING ASSOCIATED WITH S5 / S6 / S7 / S8 SCENARIO

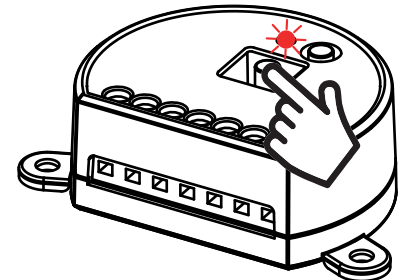
With this procedure it is possible to program transmitters compatible with the scenarios created in the application.

##### STEP 1

Make short presses of the RADIO button on the receiver. The led changes colour with each press.

Stop on the colour corresponding to the scenario to which you want to associate the key according to the following table:

| LED COLOUR | ASSOCIATED SCENARIO |
|------------|---------------------|
| Red        | S5                  |
| Green      | S6                  |
| Blue       | S7                  |
| White      | S8                  |

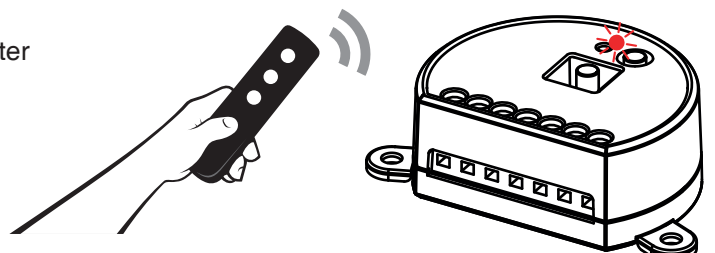


**ACTION:**  
Short pressure RADIO button

##### STEP 2

Within 60 seconds make a transmission with the transmitter to be saved.

The LED on the receiver Flashes 3 times and turns off.



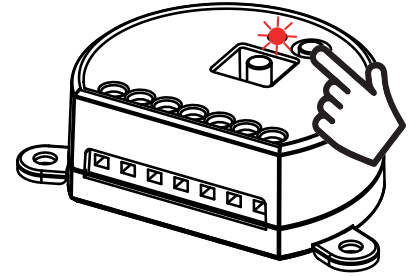
**AZIONE:** Sending a command with the transmitter **LED:** Flashes 3 times

### 4.3 - DELETION OF REMOTE CONTROL

These procedures let you delete from the memory transmitters that have already been programmed.

#### STEP 1

Hold the receiver button RADIO down (about 8 seconds.) until the LED begins to Flash.



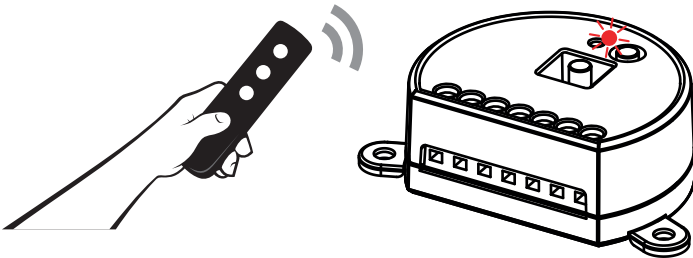
**ACTION:** Hold button RADIO down    **LED:** Flashes red

**DELETION OF SINGLE  
TRANSMITTER**

**DELETION OF ALL  
TRANSMITTER SAVED**

#### STEP 2a

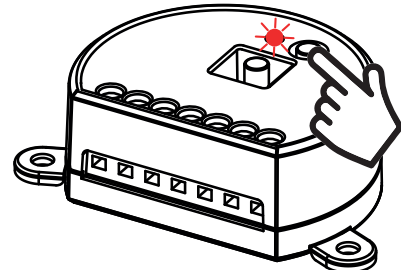
Within 10 seconds make a transmission with the transmitter that you want to delete. The LED flashes quickly and turns off.



**ACTION:** Make a transmission with the transmitter  
**LED:** Flashing quickly and turns off

#### STEP 2B

Within 10 seconds press the button RADIO on the receiver for a short time to confirm the deletion of all transmitters. The LED starts Flashing quickly and turns off.



**ACTION:** Short press of button RADIO  
**LED:** Flashing quickly and turns off

## 5 - CONTROL WITH APP ONE SMART

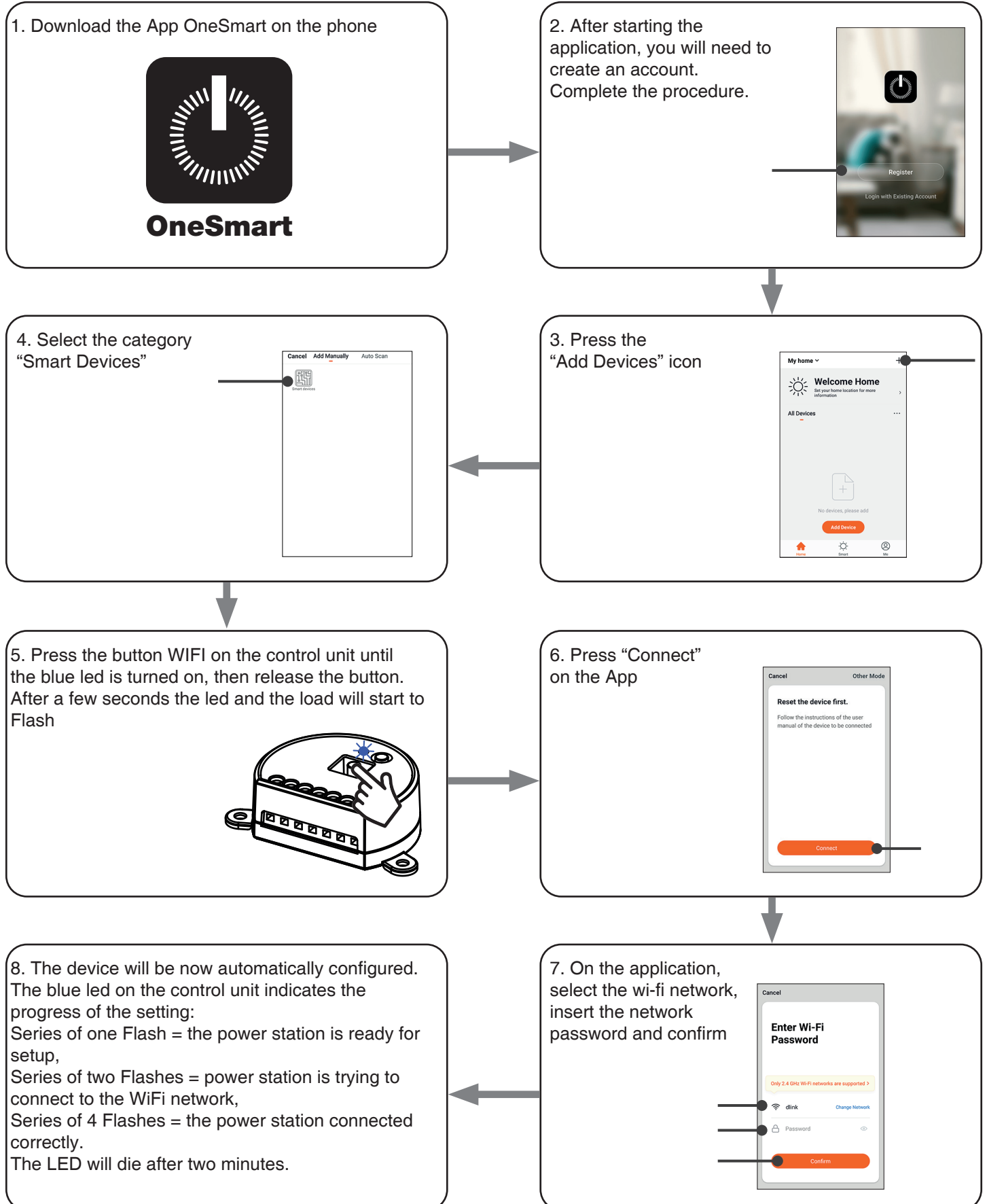
These procedures allow you to manage the system from your device (example: mobile phone) through the application and to control the system remotely.

### 5.1 - APP CONNECTION

This procedure connects the control unit Plano-One to the application. It shall be repeated for each control unit on the installation.

ATTENTION: an internet-based WiFi network is required for the operation.

#### PROCEDURE

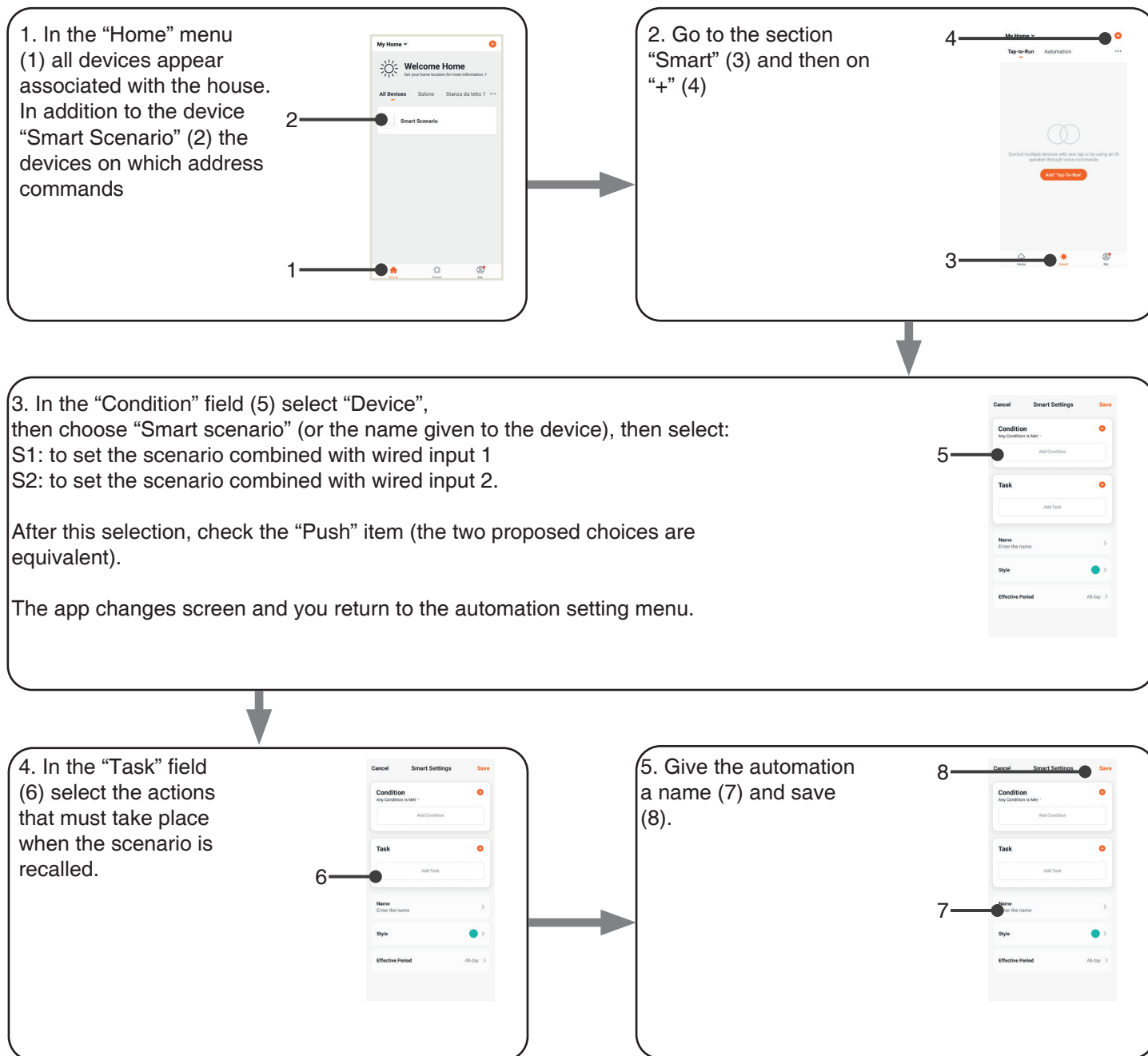




## 5.2 - USE OF “ONESMART” FOR THE CREATION OF AUTOMATIONS

After associating the control unit with OneSmart, it is possible to create the automations that will be combined with the wired inputs of the control unit.

### PROCEDURE



## 6 - ADVANCED PROGRAMS

### 6.1 - RESET OF THE CONTROL UNIT

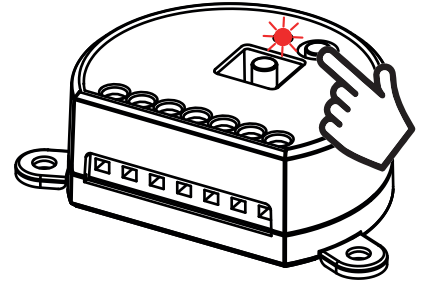
This procedure let you take the control unit back to factory settings.

**ATTENTION:** the only parameter that will not be removed will be the association with the ONESMART application. To edit or delete also this parameter, reed the procedure.

#### PROCEDURE

##### STEP 1

Hold the receiver button RADIO down (about 4 seconds.) until the LED begins to Flash.

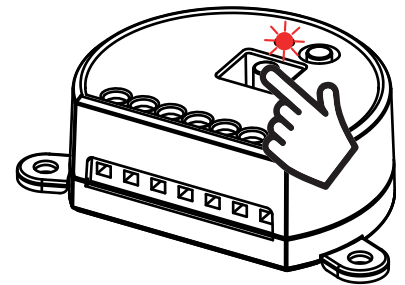


**ACTION:** Hold button RADIO down    **LED:** Flashes red



##### STEP 2

Within 10 seconds, make a short press of Wi Fi button. The LED 1 Flashes quickly and turns off.



**ACTION:** Short press of Wi Fi button    **LED:** the led Flash quicly and turns off









V1.0

**Nexta Tech**

company brand of Team srl  
via G.Oberdan 90, 33074  
Fontanafredda (PN) - Italy  
Ph. +39 0434 998682  
Email: [info@nexta-tech.com](mailto:info@nexta-tech.com)  
Web: [www.nexta-tech.com](http://www.nexta-tech.com)