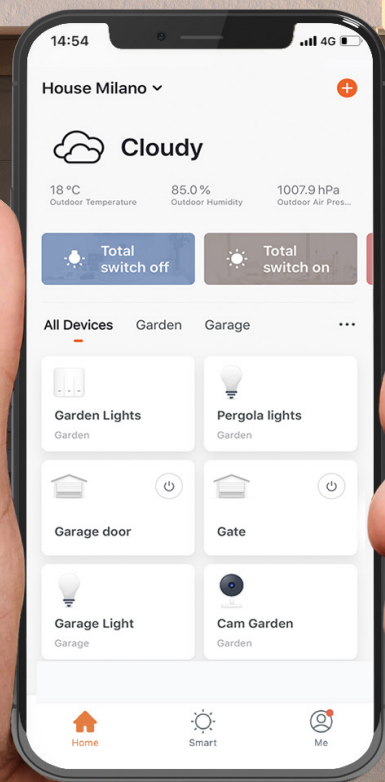
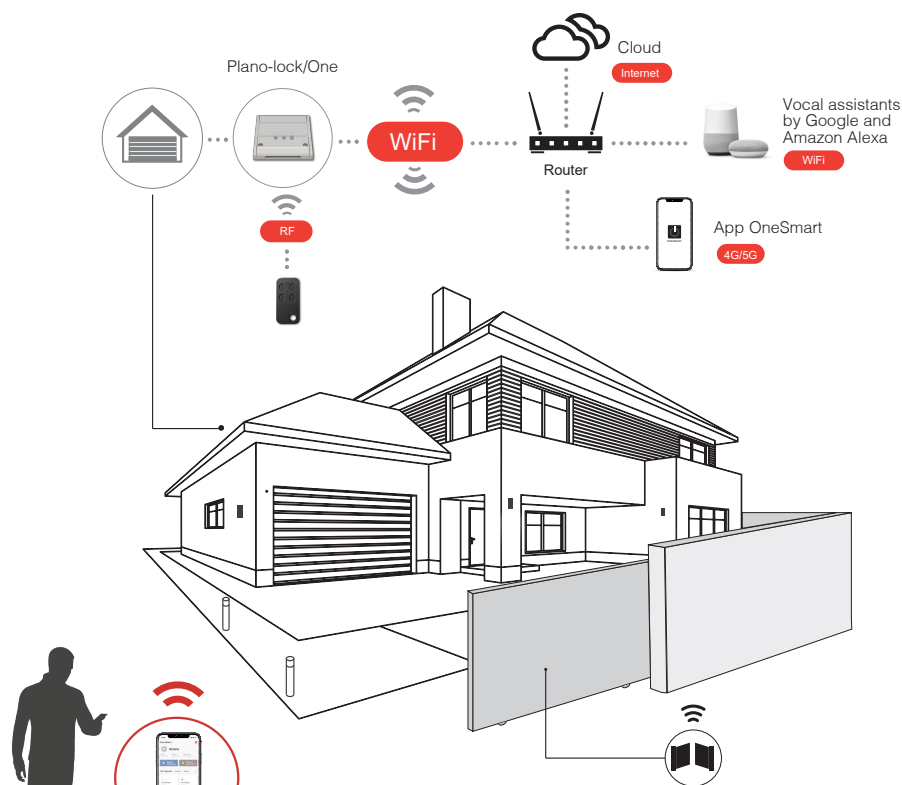


PLANO-LOCK

Smart wireless electronics
for remote control of gates
and garage doors



SMART CONTROL FOR GATES AND GARAGE DOORS

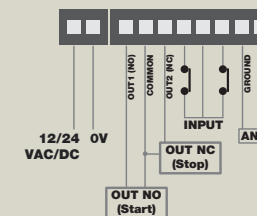
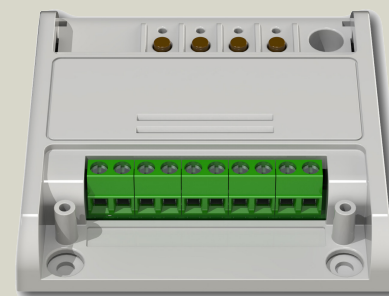


Remote and Smart control of any type of automation for doors and gates. The OneSmart app allows the remote control and the door status display. It's possible to program openings and closings at one certain time, limit access to a time slot and receive notifications directly on the phone when the gate opens.



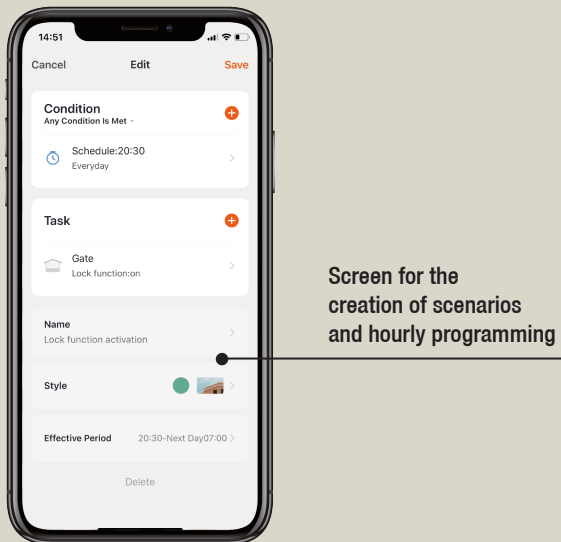
PLANO-LOCK CONTROL UNIT

Control unit for gate automation control. Power supply 12-24 Vac/dc. One output with normally open contact for motor control, one output for connection on "stop" input for blocking function. 433.92MHz radio receiver. Integrated WiFi module for remote control via OneSmart App and voice control. Input for limit switch or gates status indicator to check the status of the device.



TECHNICAL DATA

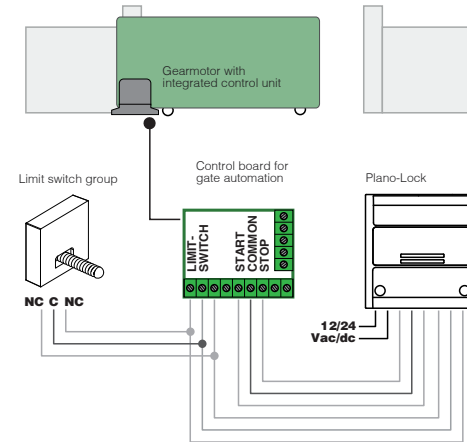
Code	PLANO-LOCK/ONE
Power supply	12-24Vac/dc
Output	1 contact NO max 1A (Function START), 1 contact NC max 1A (Function STOP)
Function	1 impulse, 1 lock function
Input	2 programmable inputs with automation status function
Radiotransmitters allowed	30
Radio frequency	433.920 MHz ISM
Wireless frequency	WIFI 2.4GHz
Smart remote control	App OneSmart
Voice command	Google Home, Alexa Amazon
Protection rating	IP20
Working temperature	-20 + 55°C
Dimensions	80x80x16 mm



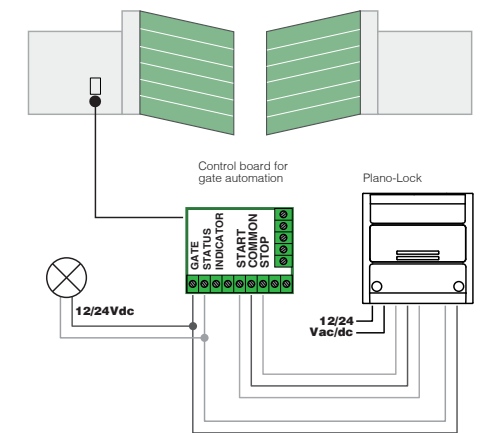
CONNECTION DIAGRAMS

To control the automation, simply power up the Plano-Lock control unit and connect it to the START contact of the gate. By connecting Plano-Lock to the limit switches or to the open gate warning light, it's possible to display the status of the door (Open-Closed), while the connection with the STOP contact allows you to implement the automation block function for a time band.

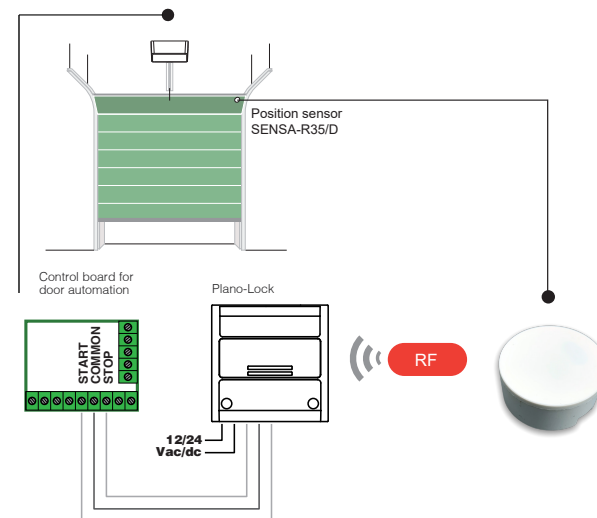
Sliding gate with electric limit switch



Swing gate with mechanical limit switch



Garage door

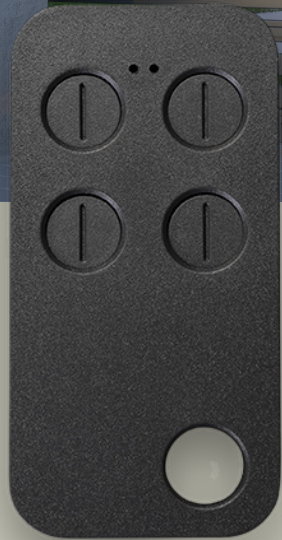
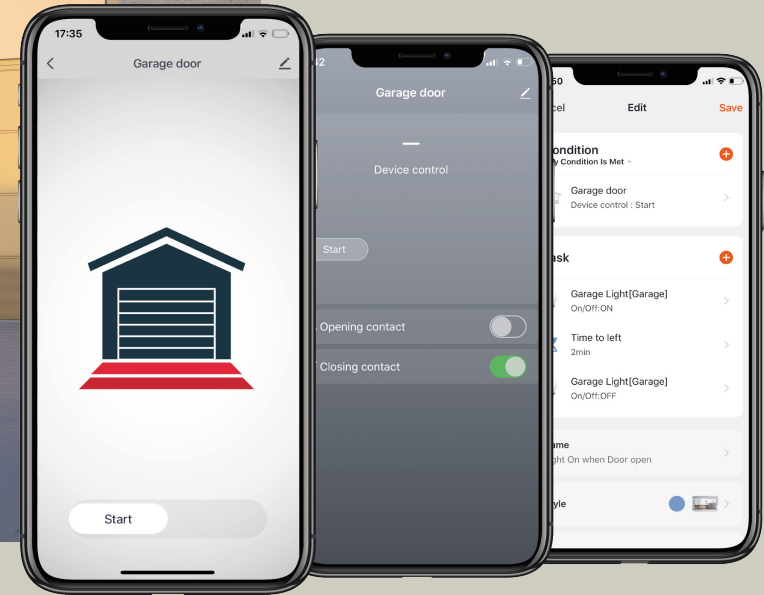


Accessory: SENSA-R35/D

Position sensor (vertical/horizontal) for sectional or overhead garage door, to display the status of the door in the OneSmart App.

SMART WIFI


NEXTA
TECH



GATE KIT

Smart wireless kit for gates and garage doors. Composed by one control unit with WiFi and RF receivers, designed for managing gates and doors automation from wherever you are, it allows you to view the current status of the door. Wireless command with one pocket-size portable remote control, smart remote control from wherever you are by App OneSmart and voice commands compatible with Google Home and Amazon Alexa. Easy set up of scenarios for a openings or closings at a certain time, or to limit accesses in a specific time slot by locking the door.

WIRELESS RF CONTROL

	1 x PLANO-LOCK Control unit interface 12-24Vdc	2 x LINEA-4R Two portable remote controls	ONESMART App for Android and iOS	VIDEO TUTORIAL Frame here
	